

ANNUAL REPORT



# APLI 2024





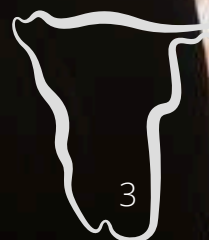


CONNECT.  
ENGAGE.  
EMPOWER.



WHEN YOU GET  
AN  
OPPORTUNITY  
TO SHINE,  
SHINE!

**Lisa Matomola**  
Managing Consultant- Hito HR





# TABLE OF CONTENTS

## INTRODUCTION

MESSAGE FROM THE BOARD	8
MESSAGE FROM CO FOUNDERS	10
THEORY OF CHANGE	15

## FELLOWSHIP PROGRAMME

WHAT WE DO	20
2024 FELLOWS PROFILES	22
2024 APLI EXCELLENCE AWARDS	24

## FOUNDATION PROGRAMME

WHAT WE DO	30
LRC CAPACITY BUILDING	31
SKILLS DEVELOPMENT TRAINING	32

## ALUMNI

IGNITE THE FUTURE EVENT	36
ALUMNI GET-TOGETHER	38

## HEADLINERS

TRIP TO ZIMBABWE	42
TRIP TO TANZANIA	44
APLI-DOYENNE MOU	45
APLI AT THE CHILDRENS PARLIAMENT	46

## MEET THE TEAM

BOARD OF DIRECTORS	50
EXECUTIVE DIRECTORS	52
ASSOCIATES AND TRAINEES	53

## COMMUNITY

PARTNERSHIPS	56
ENGAGE AND COLLABORATE	58

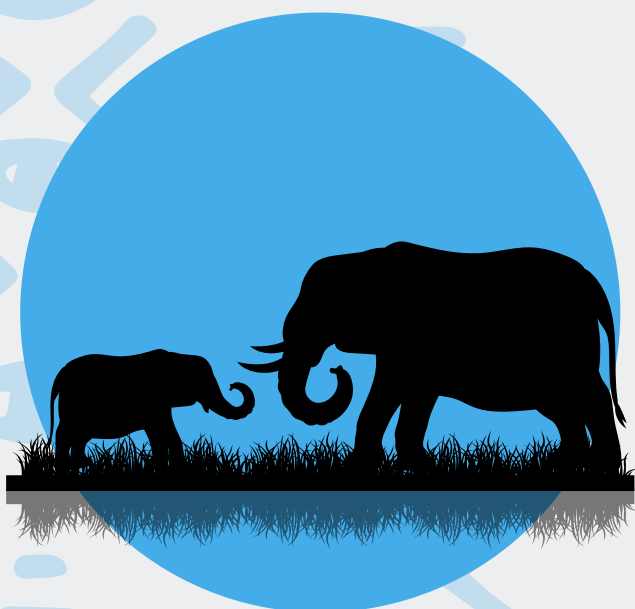
## FINANCE

FINANCIAL REPORT	62
FELLOWS REVIEWS	68











# INTRODUCTION

# 1.





# MESSAGE FROM THE BOARD

**According** to an ancient Chinese proverb, a journey of a thousand miles begins with one small step. This is such a true description of the journey that APLI has been on since the organisation's inception in 2018. It is wonderful to have been part of this growth process since APLI's founding days until where we are now in 2025.

***The growth we have observed is not only in the number of fellows trained, but also the influence and reach that the fellows and APLI have on the development of the Namibian youth, which is the nation's most valuable resource.***

“



**@ Dr Gerrit Keyter**  
APLI Board Chairperson



**APLI has had a** significant influence in the civil society and NPO sphere. This is evident by the positive feedback and reviews from 'friends of APLI' throughout Namibia, as well as APLI's international friends and partners reaching as far as the USA and Europe.

I would be naive to say that everything has only been smooth sailing since we started off in 2018. There have been significant hurdles and challenges, but like a true adventurer on a lifelong journey, APLI has faced the challenges with steadfastness and resilience. It is these virtues that we embed in all youth we work with.

Chairing the Board of Directors has and will always been a privilege for me. One of my highlights is engaging the Executive Team on a regular basis, as well as with my fellow Board Members who all have innovative ideas and inputs.

The Board is a team that holds the virtues of the organisation high, and therefore I am privileged to be part of such a dynamic, truly Namibian team.

The journey for APLI has still a long way to go, with different crossroads and turn offs that will be encountered. I am fully confident that APLI will handle each of these crossroads with sage wisdom.

*Until we meet in person,*



**Dr Gerrit Keyter**

*Chairperson of APLI Board of Directors*





# MESSAGE FROM HILJA & SEM

**Friends,** There are varying definitions of leadership. At APLI, we simply define leadership as 'the ability to get things done.' This philosophy is internalised not only by the team, but also by the youth we train and support to be leaders in their communities and spheres of influence.

**A key piece of our puzzle is building a community of these young leaders from around Namibia: motivated, proactive and driven individuals with the desire to execute change in their respective communities.**



@Hilja Eelu (Uusiku)  
APLI Co-founder

@Sem Mandela Uutoni  
APLI Co-founder



Our belief is that leadership is synonymous with action, therefore we work with individuals who have already taken action to move their communities forward. Our conviction is that they already have greatness within them and APLI's role is to unleash and connect that greatness to structures that propel them forward.

Driven by this belief, our mission, is therefore to equip youth for exponential impact. We achieve this through skills development, capacity building, and mentorship.

Since our early days, APLI has distinguished itself in supporting youth-led businesses and social enterprises. This is by enhancing capacity and the confidence of young people to develop, implement and scale solutions to the most pressing challenges of our time.

Supporting youth to create positive change within their own communities is critical to the advancement of society as a whole. Through APLI, we see firsthand the outstanding impact that skill-building and networking can have among young leaders.

This impact is made even more effective when young leaders are mentored and supported within their contexts. We hope to see the ripple effects of this for years to come.

APLI spring-boards our beneficiaries into being changemakers in the long term. They are connected to a like-minded community that fosters collaboration and inspiration, equipped with the practical knowledge required to extend one's impact and reach, and have access to a network of people who have walked the path and are forthcoming about how you can do it too.

“  
*To date, we have trained over **700 young people** from all 14 regions, and expanded to the SADC region with a pioneering organization in Tanzania. These young people have reached a combined impact of over 4000 people.*



“

*As we usher into our 7th year of operations, it's vital to remember that our work is far from finished. The needs and challenges affecting youth are greater than ever, demanding scale, innovation and partnerships.*

We are extremely proud of the role APLI has played in ensuring that young people have access to the tools they need to succeed and we remain committed to continuing our work to support the next generation of leaders, entrepreneurs and social entrepreneurs.

Over the years, we have seen and celebrated the resilience of youth, who despite the barriers and increasing challenges inflicted upon them, not only survive but persevere, thrive and create incredible impact.

We are inspired by the possibilities that the future presents and we hope to continue working with you to transform lives and shape a brighter future!

***Upwards and Onwards,  
Sem and Hilja***

Handwritten signatures of Sem and Hilja in black ink.







***APLI is one of the few youth development organizations in Namibia, created by Namibians for Namibians, by the youth for the youth. It provides young people with a unique opportunity for personal growth, professional development, and entrepreneurial success through its innovative programs.***





# OUR THEORY OF CHANGE

**In the years ahead,** we envision APLI Fellows making significant strides in their industries and communities, challenging the status quo, and driving meaningful change. As they step into classrooms and boardrooms, we anticipate that they will bring fresh perspectives, having gained a deep understanding of professional environments.



**Our mission is** to cultivate a generation of young individuals who are well-prepared to excel in these areas. Through this process, they develop influence, find their voices, and confidently navigate the spaces they occupy and the relationships they build.



**By embracing this** theory of change, we are nurturing a new generation of young leaders that are integrity—equipped with the skills, networks, and resources to unlock their potential and contribute meaningfully to the socio-economic development of their communities.







**Nurturing** leadership, personal development and social responsibility amongst youth




**Supporting youth** to start and scale robust, sustainable and profitable businesses and social enterprises;



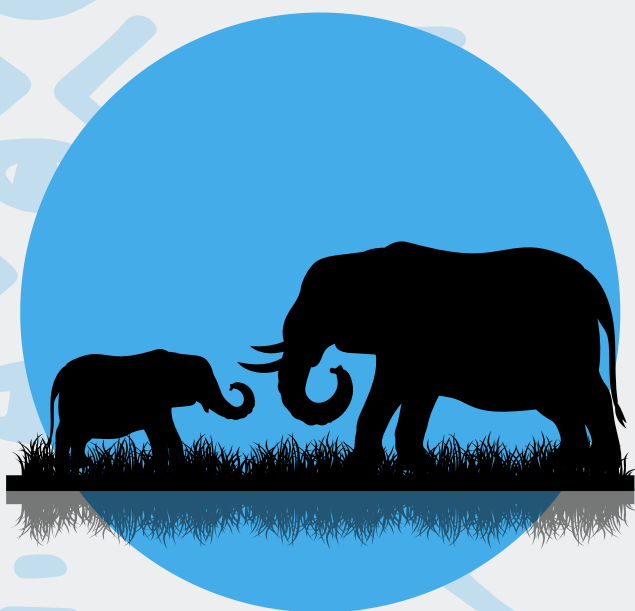


**Connecting youth** to industry leaders, financiers and entrepreneurs for funding, mentorship and development opportunities



**Building a community** of likeminded peers and leaders, conscious of their role in building a better world and supporting each other in their work.







# 2.

## FELLOWSHIP PROGRAMME





# FELLOWSHIP: WHAT WE DO

**The African Pathfinder Leaders Initiative (APLI) empowers** young leaders across Namibia to drive positive change in their communities. Our unique model is centred around three immersive residential programs held in different locations annually, each lasting 3-5 days. These programs are designed to provide practical skills, mentorship, and a supportive community for youth leaders to develop and implement impactful projects.

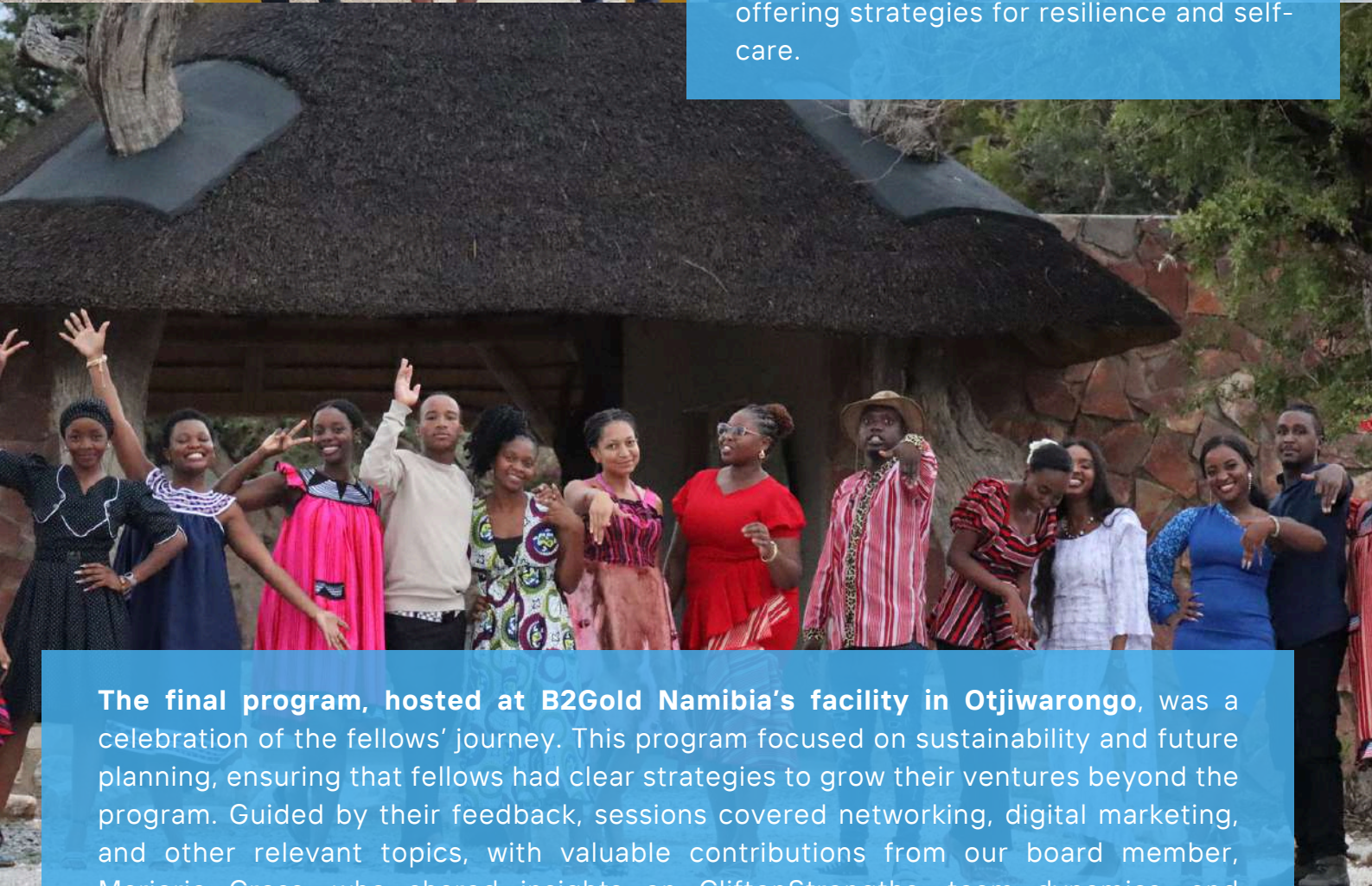


**We kicked off 2024 in Windhoek** with a foundational program designed to set the stage for the year ahead. Fellows engaged in sessions on conscious, accountable, and transformational leadership, sustainable brand-building, creative entrepreneurship, emotional intelligence, and financial management, among other key topics. As part of the first residential program, they took the Clifton Strengths Test to identify their areas of strength and received personalised coaching from a certified Clifton Strengths coach on how to leverage these strengths effectively. In the months that followed, fellows participated in a series of activities and challenges, applying their learning to initiate community development projects. This hands-on approach is central to APLI's mission of equipping young leaders with the skills and knowledge to make meaningful contributions to their communities.





**Our second residential program in Keetmanshoop** provided a platform for fellows to present their project progress, refine their ideas, and tackle challenges through engaging sessions on team building, community engagement, and writing grant proposals. Recognising the emotional and mental challenges that come with leadership, this program also prioritised holistic wellness, creating a safe space for open discussions about personal and professional struggles, while offering strategies for resilience and self-care.



**The final program, hosted at B2Gold Namibia's facility in Otjiwarongo,** was a celebration of the fellows' journey. This program focused on sustainability and future planning, ensuring that fellows had clear strategies to grow their ventures beyond the program. Guided by their feedback, sessions covered networking, digital marketing, and other relevant topics, with valuable contributions from our board member, Marjorie Cross, who shared insights on CliftonStrengths, team dynamics, and international best practices. The year concluded with a heartfelt graduation ceremony, marking the beginning of a new chapter for our fellows as they continue to create lasting impact in their communities.





### **Martha Taukuheke Nambahu**

Community development advocate, founder and CEO of High Dream Institute of Adult Education (education for illiterate youth).

### **Arnolda Booysen**

Food and Nutrition Security Enthusiast, Value Addition consultant, Founder of NivAgri Ventures Cc.

### **Alison Musodza**

Law Student and Youth leader.



### **Valentine Kasoma**

Entrepreneur, Accessibility Nutrition Innovator, founder of VK Bakes and a Teacher.

### **Anna KN Mulundu**

Community development and social impact activist, founder of CN Mulundu Foundation.

### **Mashazi Lyonga**

Community development, education enthusiast and Teacher.



### **Selma Nitembu**

Mathematics and Statistics, Entrepreneur: founder of Shenatungo.

### **Suzeth Ngutonua**

Mental and Emotional Well-being Enthusiast, Founder of Growing In Community and Aspiring Realtor.



**Carlin Goa-Eises**

Community development, Pharmacist, menstrual cycle educator and founder of Period.

**Kondjeninasho Beata Ashikuni**

Academic, HR Expert, Public Policy Management Analysis and community development enthusiast, Founder of Talks of Reality Namibia.

**Gowaseb Nostradamus**

Political Scientist and founder of GEN Foundation.

**Sylvia Uutoni**

Dentist, Volunteer Work and Entrepreneurship.

**Prosper Kadhila**

Medical student and co-founder of El-Roi Namibia.

**Pandeni Ainima**

Creative, Web and Graphic Designer, IT Enthusiast.

**Dorteia Nakandjibi**

Agricultural economist, Agribusiness and Value Chain enthusiast, founder of YADI.



***APLI's Mavericks cohort*** has community projects, startups and ideas in areas such as Agriculture, Law, Finance, Education, Health and Arts & culture.



# 2024 EXCELLENCE AWARDS

***At APLI, we believe in celebrating excellence and recognizing the incredible achievements of our fellows.***

To honour their hard work and dedication, we present Excellence Awards to those who have demonstrated exceptional effort and impact in various areas throughout the year.

This year's awardees have inspired us with their innovation, resilience, and passion for making a difference. The Community Development Award recognises fellows for their remarkable contributions to uplifting their communities, the Implementation Award highlights outstanding execution of projects.

The Entrepreneurship Award celebrates creativity and business acumen, and the Personal Development Award honours transformative growth journeys. The Kick-starter Award acknowledges exceptional project launches, and the Partnership Development Award, presented in two categories—External and Internal—celebrates efforts in fostering strong external collaborations and contributions to strengthening connections within the APLI network, respectively.

The Iterative Initiative Award is given for the ability to adapt and improve projects, and the Innovation Award honours fellows with groundbreaking ideas.



These awards reflect the dedication, creativity and impact of our fellows, and we are incredibly proud of their accomplishments as they continue to make meaningful contributions to their communities.



**Gowaseb Nostradamus**

*Founder of GEN Foundation, an NGO committed to addressing the critical challenges highlighted in SDG 1 through 4: No Poverty, Zero Hunger, Good Health and Well-being, and Quality Education by uplifting vulnerable communities, with a particular focus on children and youth living in underprivileged areas of Khomas, Namibia*  
Community development award.



**Suzeth Ngutonua**

*Founder of Growing In Community, aimed at creating a resilient and empowered community by addressing the root causes of mental health challenges, fostering healing, and inspiring lasting transformation.*  
Implementation award.



**Pandeni Ainima**

*Certified IT, Freelance Graphic Designer & Web Development Professional.*  
Internal partnerships award.





**Selma Nitembu**

*Founder of Shenatungo, a dynamic brand in the beauty industry, operating as a student-friendly hair salon that caters primarily to young, style-conscious customers. With a team of 10 skilled hairdressers and 15 independent tenants. Shenatungo is known for its affordability, and dedication to staying on-trend,*  
Innovation and Entrepreneurship award



**Arnolda Booysen**

*Food and Nutrition Security Enthusiast and Founder and CEO of NivAgri Ventures Cc, a business transforming indigenous foods into nutritious, value-added products.*  
innovative Award



**Sylvia Uutoni**

*Founder of Organic Feminine Hygiene, which provides a safe space for women experiencing unhygienic intimate environments.*  
Kick starter Award





**Valentine Kasoma**

*Founder of VK Bakes, a business that specialises in creating baked goods such as Cake loaves, desserts and sweet treats.*

Entrepreneurship Award



**Alison Musodza**

*Student Leader, Vice President of the UNAM Law Students Council.*

Personal Development Award

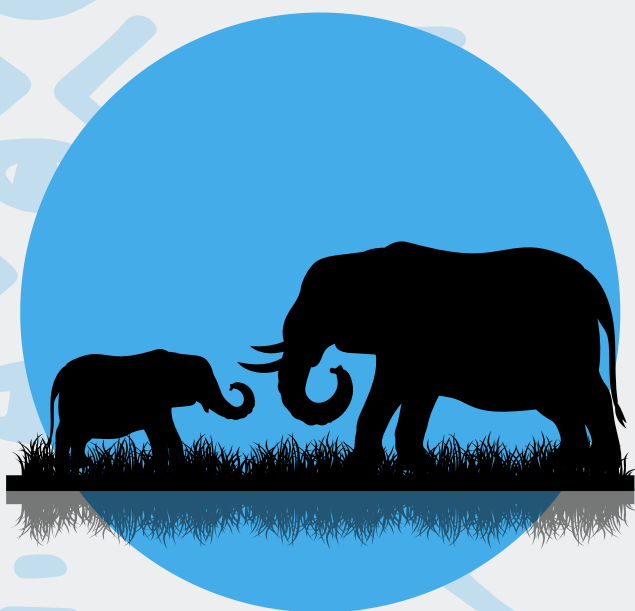


**Mashazi Lyonga**

*Teacher by profession.*

Personal Development Award







# 3.

## FOUNDATION PROGRAMME





# FOUNDATION: WHAT WE DO



**APLI recognises that young leaders**, especially in high school, are often selected on the basis of popularity and/or good grades, yet are expected to lead within their schools and communities and are expected to be a role model to other students.

The Foundation Programme equips them with fundamental leadership training, critical to their current positions and beyond. This enables them to serve their peers effectively and prepare them to lead on larger platforms.



***The principle applied** here is to identify, invest and develop talent from an early age.*



**@ Justus Kapeta Fernando**  
Foundation Program Associate



# LRC CAPACITY BUILDING

**In keeping up with its principle to identify,** invest and develop talent the APLI Foundation team on hosted a leadership training for Learners Representative Council (LRC) members from 3 different high schools within Aminuis, Omaheke region.

The training stems from the rationale that these young people have been entrusted with the responsibility of leading, guiding, representing and making decisions on behalf of their peers.

**As a result,** the training equipped the learners with necessary tools to succeed in their new leadership roles through interactive topics such as on leadership 101, emotional intelligence, decision making, conflict resolution, and time management.





**The participants expressed gratitude** for the knowledge and skills learned during the training, with many noting how it provided practical solutions and how the topics allowed them to reflect on their self-awareness. For all these learners, this was the first leadership training of this kind that they have attended.



## UNAS PERSONAL AND SKILLS DEVELOPMENT TRAINING

**In May**, the APLI foundation in collaboration with UNAM Accounting Society (UNAS) hosted a personal and skills development training for over 40 members of the society. The training was aimed at equipping student with skills on mental health, effective leadership, decision making, goal setting and how to prepare yourself for the job market. The training was tailored to cater for both soft and hard skills that the students need to develop.

To increase chances of standing out during job searching, the students were taken through an interview simulation exercise touching areas such as how to prepare for job interview, as well as resume and cover letter writing.





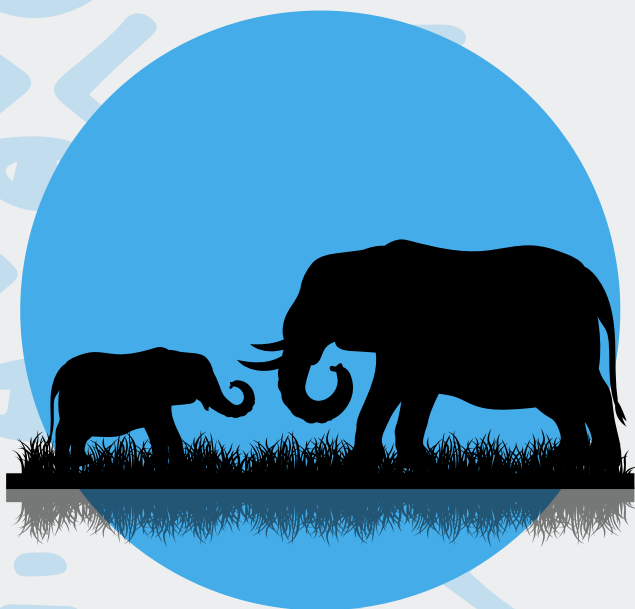
“

***In an era where standing out is not just an aspiration but a necessity, APLI offers you the opportunity to transcend academic boundaries and tools to emerge as distinctive leaders.***

*Hon. Patience Masua  
Member of Parliament,  
Namibia*









# ALUMNI 4.





# IGNITE THE FUTURE SUMMIT

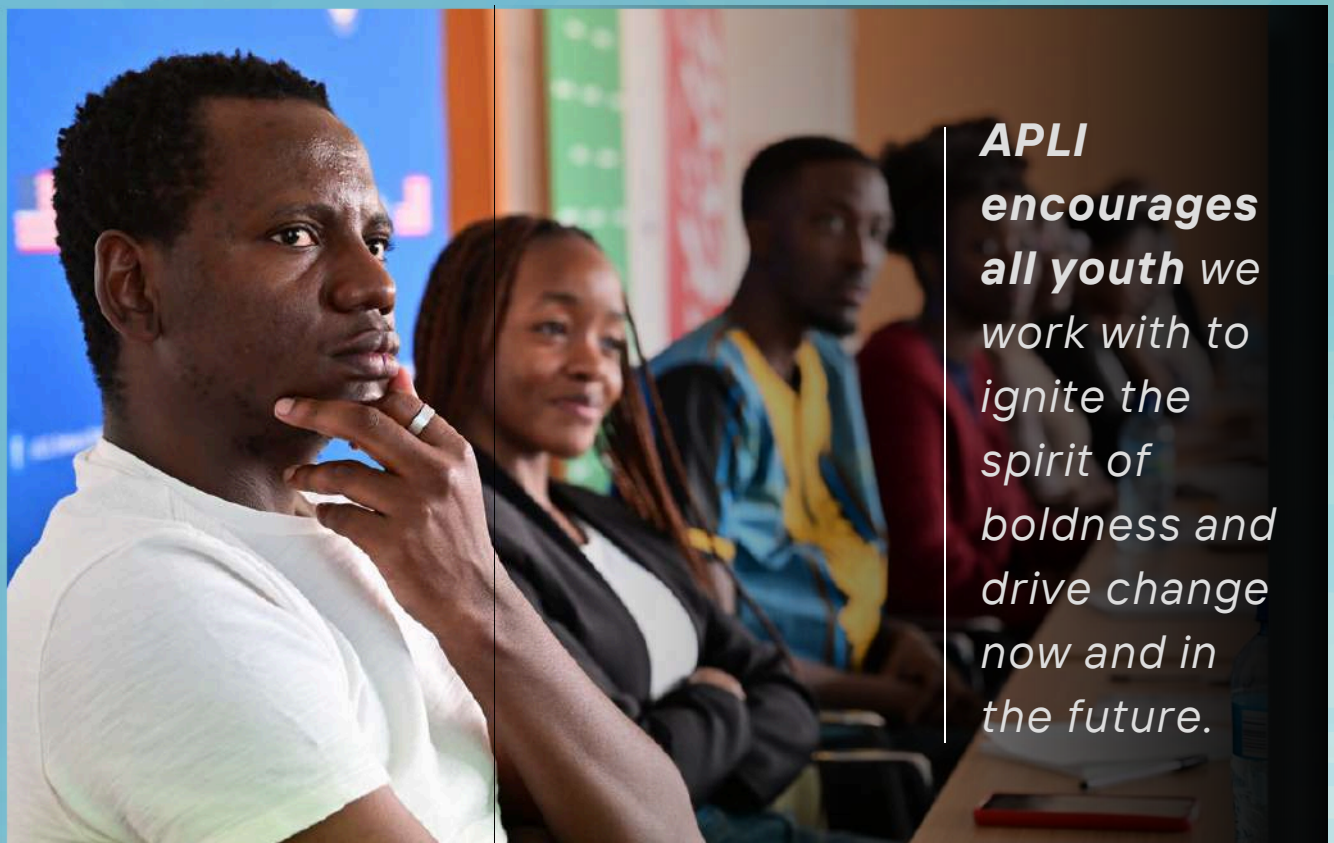
In September, APLI convened the historic “Ignite The Future’ Summit at the US Embassy in Windhoek. The event brought together 29 youth from across Namibia, comprising of both alumni and current fellows of the APLI Fellowship Programme.

The attendees benefited from training with top experts from Switzerland, Germany and Tanzania representing B360 Partnerships for Education and Doyenne Organisation respectively. The speakers delivered intriguing sessions on building a career portfolio, personal branding, leadership and financial management.





**Overall,** the African proverb *"Mali Bila Daftari Hupotea Bila Habari"* African proverb - money without record vanishes without your knowledge summed up the summit. The alumni and fellows represented the spirit of networking and collaboration that APLI embodies. These collaborations and relationships that will be fruitful and drive further impact in their communities.



**APLI**  
**encourages**  
**all youth** we  
work with to  
ignite the  
spirit of  
boldness and  
drive change  
now and in  
the future.




# ALUMNI GET TOGETHER

Starting off the year strong, the Alumni Engagement team hosted a get together event for all Alumni.

This event fostered community and encouraged growth and continuous strengthening of the bond among the fellows. The event included team building activities, sports, wellbeing and mental health activities. The positive energy and enthusiasm displayed by the alumni underscored the enduring impact of the APLI experience on its alumni community.





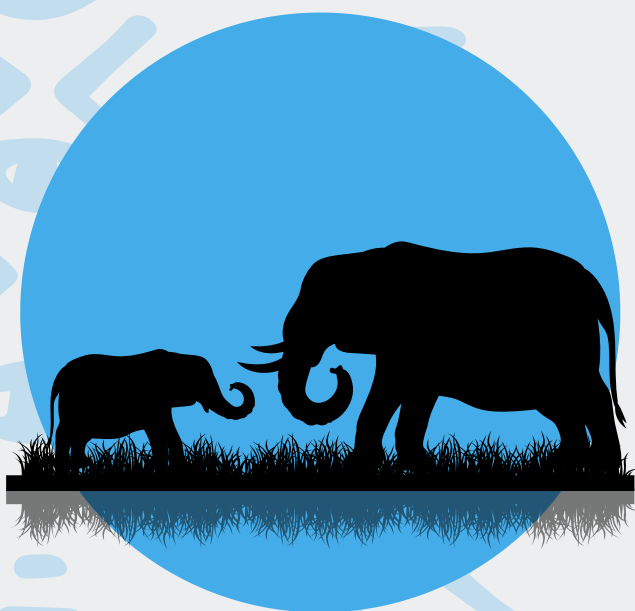


*At APLI , the team fully  
understands that the  
only constant in the  
world today is **CHANGE**.  
APLI prepares you to  
recognise the need for  
change.*

“

**Coenraad Coetzee**  
Group Chief IT officer,  
Pupkewitz Group of Companies







# 5 HEADLINERS





# GFC REGIONAL CONVENING IN ZIMBABWE



**The African Pathfinder Leaders Initiative (APLI) was invited to attend a Regional Convening for organizations that have benefited from the Global Fund for Children – Spark Fund.** The convening took place in Victoria Falls -Zimbabwe, from 16 – 18 July 2024. Justus Fernando – Programs Associate and Robinson Hangula – Board member represented APLI at the convening.



**The purpose** for the convention was for organisations that have benefited from the Global Fund for Children (GFC) Spark Fund to have a platform to learn from each other, share best practices, and explore collaboration opportunities.



**During the 3-day** convening the following are some of the sessions and activities that the participants engaged into; Introduction of the GFC team, 'Speed dating' activity for organizations to exchange information, Presentation on monitoring, evaluation and learning (MEL), Presentation by GFC's finance team on financial management, including budgeting and transformational leadership, Talent night for participants to showcase their skills and reflection on the impact of the Spark Fund, using a tree metaphor to illustrate goals and changes needed.

**Furthermore, the convening aimed to strengthen** connections among organizations benefiting from the Spark Fund, facilitate knowledge exchange, and encourage collaboration to enhance organizational effectiveness and impact. It provided an opportunity for participants to reflect on their goals and the influence of funding on their initiatives, while also learning essential skills in financial management and leadership. APLI could leverage the connections with organisations within the GFC Spark Fund to enhance the APLI Fellowship Program, connecting fellows with similar initiatives. The GFC finance team had offered to provide fundraising coaching for the organizations. The convening was a valuable experience that highlighted APLI's reputation beyond Namibia and the potential for future opportunities. The insights gained will inform strategies for enhancing partnerships and collaborations moving forward.





# APLI TO THE WORLD: TRIP TO TANZANIA

In September, the APLI Team undertook an exchange programme and learning visit to **Doyenne Organisation**, a Tanzanian youth development organization. This visit was facilitated by IREX to create a pathway for learning, collaboration, and cultural exchange between APLI and Doyenne.



The APLI Team attended the first colloquium of the Niongoze Fellowship Programme, a programme for empowering female leaders across Tanzania. The team also delivered and facilitated sessions on vision creation, personal branding and leadership. These sessions were aimed at developing leadership skills among young female leaders.

The mission to Tanzania was highly successful, providing us with valuable opportunities for learning and collaborating. The strengthened partnership with the Doyenne Organisation and the insights gained from the visit will significantly benefit APLI's current and future initiatives.





# BUILDING PARTNERSHIP BRIDGES: APLI - DOYENNE MOU

Our youth development efforts were strengthened through the signing of a groundbreaking Memorandum of Understanding (MoU) with Doyenne Organisation.

This partnership will build upon our collaboration and is a significant step towards our joint work of empowering young leaders across Africa. This partnership is a roadmap to share knowledge, experiences and best practices on youth development. Together, APLI and Doyenne are building bridges and creating impactful change!

**APLI and Doyenne** are widely recognised as leading youth organisations in Namibia and Tanzania, therefore this partnership allows to leverage our strengths and work effectively together on youth development and sustainable development projects.



[www.doyenne.or.tz](http://www.doyenne.or.tz)  
#LeadershipHasNoGender



# APLI AT THE CHILDREN'S PARLIAMENT

**On July 14, 2024, Ms. Elizabeth Ipangelwa, Vice Chairperson of APLI, presented** to the Children's Parliament, focusing on APLI's work and impact across Namibia. The session was attended by participants from various regions who were eager to learn about APLI's initiatives.

Ms. Ipangelwa discussed the importance of youth involvement in community projects and social development, she explained how APLI supports these efforts. Furthermore, she provided an overview of the various programmes and services offered by APLI. The presentation highlighted APLI's goals, which include nurturing leadership, personal development, and social responsibility among youth.


The participants were particularly interested in how they could bring APLI's programmes to their schools and actively participate in them. They also asked further questions about the Fellowship and requested for equal representation across all the 14 regions.

The feedback from the Children's Parliament was very positive, with many expressing a desire to collaborate with APLI. Given this interest, APLI is extending partnerships with schools to expand its outreach and impact among young people across the country through the Foundation Programme.



**@ ELIZABETH IPANGELWA**  
APLI Board Vice Chairperson





***Remember***, there are others with similar qualifications. Your goal is to stand out and sometimes that edge can come from a short course like the APLI fellowship.

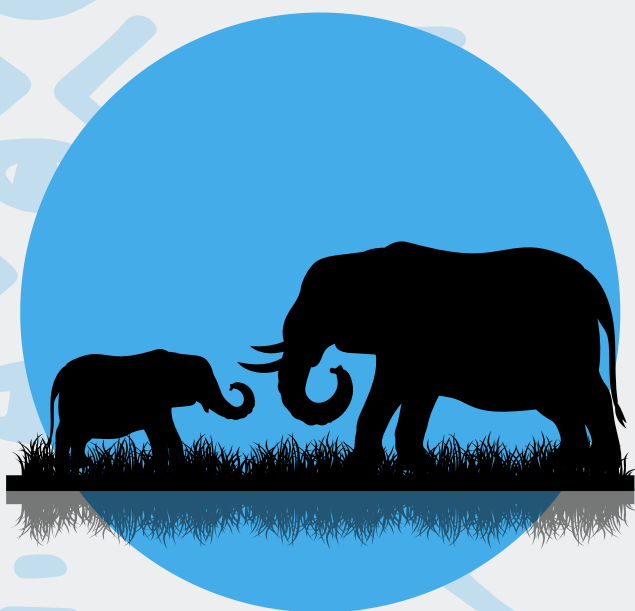
“

---

***Tuuda Haitula***

*Career Coach and Industrial Psychologist*







MEET THE TEAM

6.







# BOARD MEMBERS







*From Left to right, going down:*

**DR. GERRIT KEYTER** Chairperson (Independent Non-Executive Director)

**ELIZABETH IPANGELWA** Vice Chairperson (Independent Non-Executive Director)

**ROBINSON HANGULA** Independent Non-Executive Director

**SEM MANDELA UUTONI** Executive Director

**JONAS ILEKA** Independent Non-Executive Director

**HILJA EELU UUSIKU** Independent Non-Executive Director

**MARJORIE CROSS** Independent Non-Executive Director

**VILHO MUKUVE** Independent Non-Executive Director



# EXECUTIVE DIRECTORS



**Hilma Nampweya**  
Programmes



**Djeimo Mwanyekele**  
Communications



**Sarafine Martin**  
Governance



**Sem Utoni**  
Partnerships



**Paulus Amuthenu**  
Finance



# ASSOCIATES



**Loide Angula**  
Governance

**Cecilia Amunyela**  
M&E

**Justus Kapeta**  
Foundation

**Rauha Uugwanga**  
Alumni

**Paulus Katuta**  
Finance

# TRAINEES



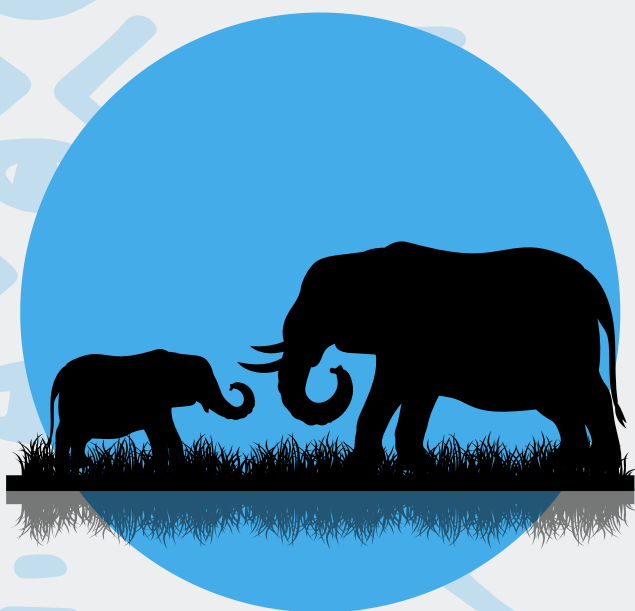
**Tjino Tjipura**  
Foundation

**Naboth Decelestino**  
Programs

**Gideon Simon**  
Programs

**Nondumiso Ngwenya**  
Communications







7.

COMMUNITY





# PARTNERSHIPS

## THE GLUE THAT BINDS

**S**ince our establishment in 2018, we've worked tirelessly in building a network of partners, friends and champions for our work. Together, we've incrementally solidified and expanded our commitment to youth development and entrepreneurship through continued investments. What unites us and our partners is our resolve to provide critical support and resources to young people.

“

*We are convinced, more than ever, in APLI's mission to connect the greatness of young people who are full of potential, vibrant and relentless in their transformative work.*



**@Djeimo Mwanyekele**

APLI Director of Communications



However, we cannot achieve this mission on our own. Merging our ethos for partnerships and fuelled by our passion, we hope to take this work to the next level as it facilitates the transformation of our interest into continued action.

Building stronger collaborations with like-minded and mission-aligned local and international organizations was a key focus in 2024. These partnerships have allowed us to garner not only goodwill but also financial and non-financial resources to deliver on our programmes and expand our reach and impact. In doing this, we provide top-notch value to our participants and partners alike.

From Namibia to Tanzania and beyond, partnerships have enabled us to cultivate hope and provide life-changing programmes and opportunities that to ensure that youth have access to the tools, resources and networks they need to thrive.

Looking into the future, we are reminded that the work of building APLI is far from over, and we count on your support as we continue to lift the brick.

**Join us on this remarkable journey as we support bold ideas, and the extraordinary young leaders behind them.**

# ENGAGE AND COLLABORATE FOR IMPACT



We extend our heartfelt gratitude to our valued partners for their unwavering support and collaboration throughout the year. Your contributions, dedication, and shared vision have been instrumental in helping us achieve our goals and make a meaningful impact in our community. Together, we have continued to drive positive change. We look forward to strengthening our partnerships in the coming year and achieving even greater milestones together.



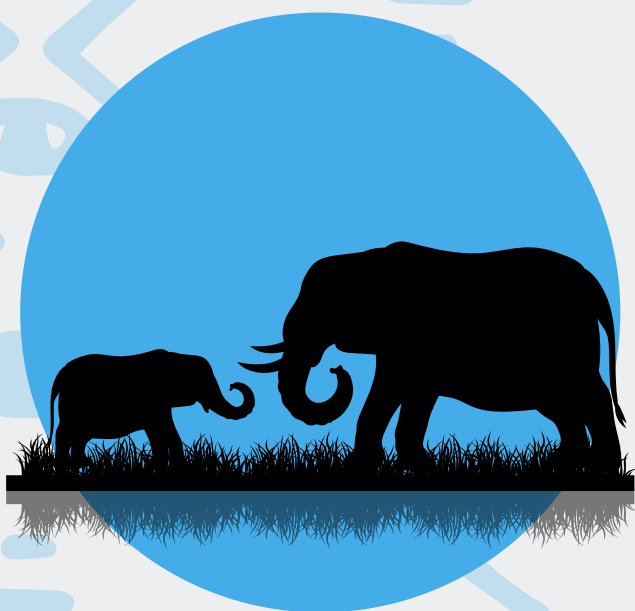




**Thank you** for being an essential part of our journey and for helping us shape a generation of young game-changers, trailblazers and superstars!

As we look into the future, we are taking intentional steps to increase our partners and supporters.







# 6.

## FINANCE





# FINANCIAL REPORT

***Being APLI's flagship program, the fellowship program used the largest share of the available funds and accounted for over 82%, a 2% increase from the previous year.***

*The private sector remains our major source of revenue.*



**@ Paulus Amuthenu**

*APLI Director of Finance*



## 2025 REVENUE (%)



PRIVATE SECTOR



GLOBAL FUND

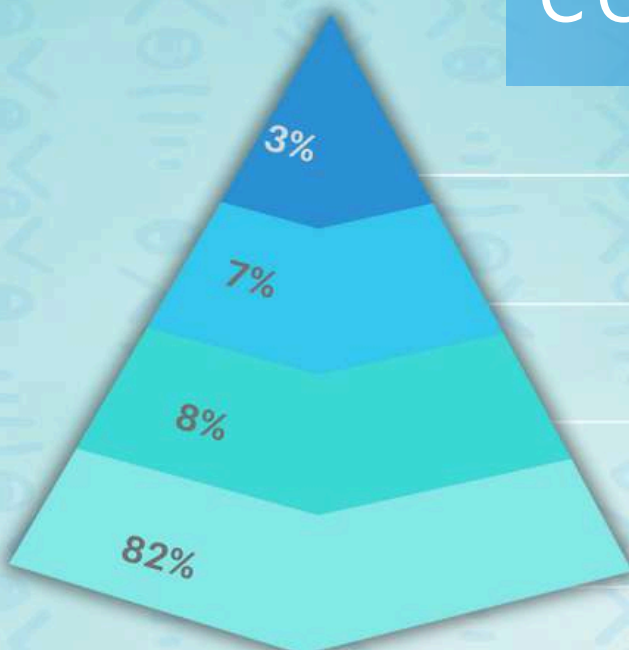


OTHERS



GENERAL PUBLIC

## 2025 COSTS BY FUNCTION



• PARTNERSHIP ENGAGEMENT

• FOUNDATION PROGRAM AND  
OTHERS

• ALUMNI ENGAGEMENT

• FELLOWSHIP PROGRAM

# THANK YOU



**SHOPRITE**



**HITO FR**  
People First





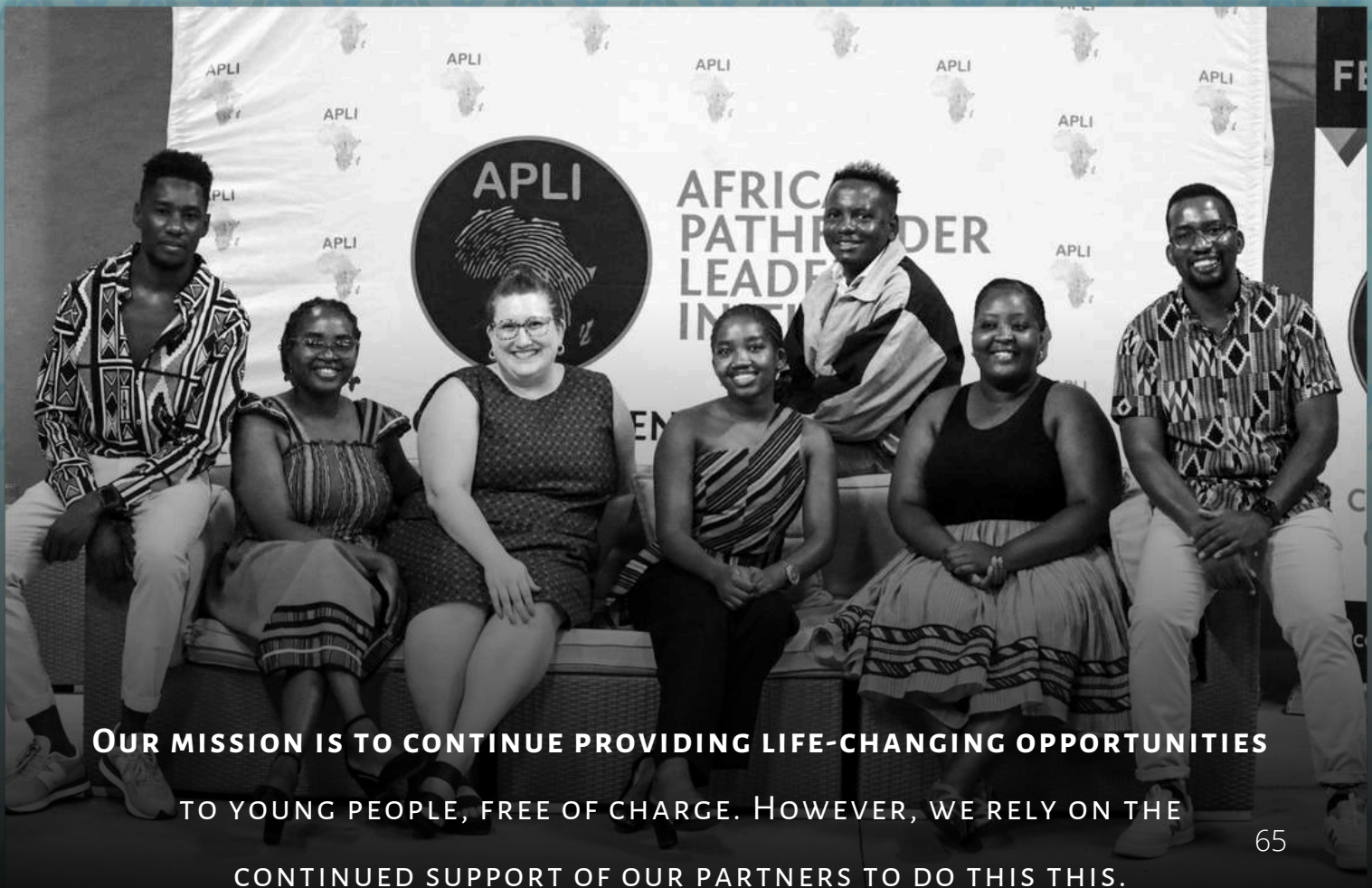


**B360**  
education  
partnerships

**namibmills**  
FEEDING THE NATION



JOURNEY TO FINANCIAL FREEDOM & FOOD SUSTAINABILITY



**OUR MISSION IS TO CONTINUE PROVIDING LIFE-CHANGING OPPORTUNITIES TO YOUNG PEOPLE, FREE OF CHARGE. HOWEVER, WE RELY ON THE CONTINUED SUPPORT OF OUR PARTNERS TO DO THIS THIS.**










END






**R**eflecting on 2024, I am overwhelmed with gratitude. The connections I've built, the wisdom shared by visionary speakers, and the unwavering drive of my fellow APLI members have been nothing short of life changing.

I was surrounded by some of the brightest minds and boldest hearts—people who dared me to think beyond mental limitations, to take up space unapologetically, and to dream bigger than ever before.

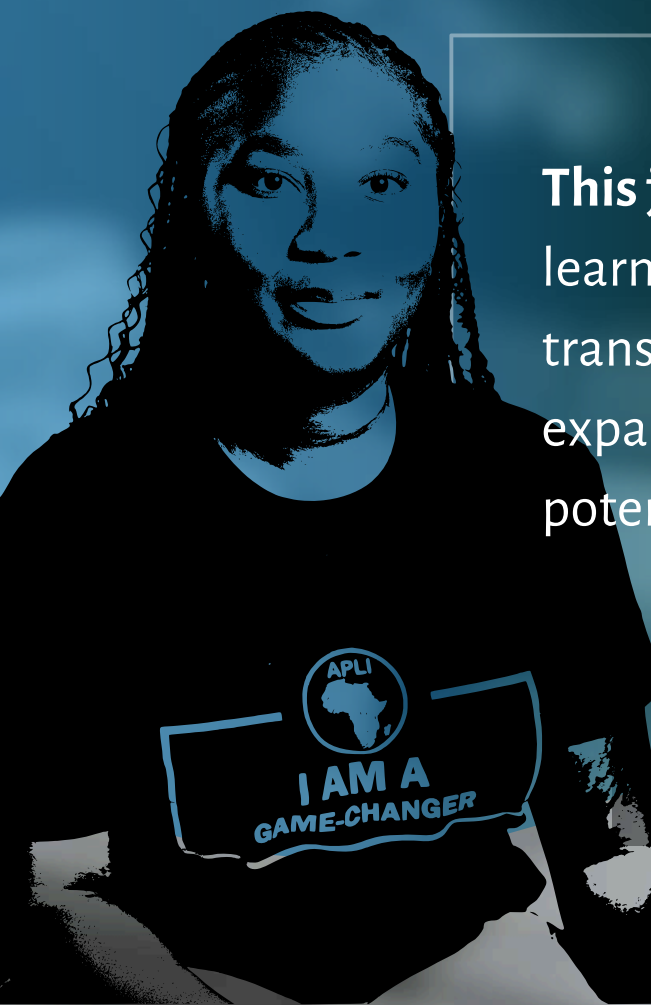
Mindlessly sitting on your potential is one of the greatest disservices you can do to yourself. This experience challenged me to branch out, challenge norms, and step into my power. For that, I am forever thankful.

African Pathfinder Leaders Initiative (APLI); your service to the Namibian youth, at least to this Namibian youth, has not gone unnoticed. You've planted seeds of confidence and vision, and I am proud to be a part of this legacy.



**This journey** wasn't just about learning—it was about transformation, growth and expanding the borders of my potential.

**Prosper Kadhila**  
Founder- Elroi  
APLI 2024 Maverick







**Prosper Kadhila**

Relator  
Connectedness  
Developer  
Achiever  
Empathy

OptimaStrengths



**Cappy**  
SODA & DRINK BLEND  
SABOR A BASE DE  
FRUTAS DE SAZÃO  
330 ml - 33cl

I am the founder and leader of Gen-foundation, an NGO dedicated to community development initiatives for youth in informal settlements.

I joined APLI to gain the skills, training, and guidance they provide. Their support has been invaluable in our mission.


Thank you APLI Namibia for the valuable training, knowledge and guidance. Your support has been instrumental in my journey.

**I am committed to continuing** my community service and making a lasting impact!

**Nostradamus Gowaseb**  
Founder- Gen Foundation  
APLI 2024 Maverick







In an era where standing out is not just an aspiration but a necessity, African Pathfinder Leaders Initiative (APLI) offered us the unique opportunity to transcend academic boundaries and tools to emerge as distinctive leaders.



**Our projects and ventures** are not just plans; they are blueprints for progress, pillars upon which the edifice of a prosperous Africa will stand.



**Beata Ashikuni**  
Director- Talks of Reality  
APLI 2024 Maverick





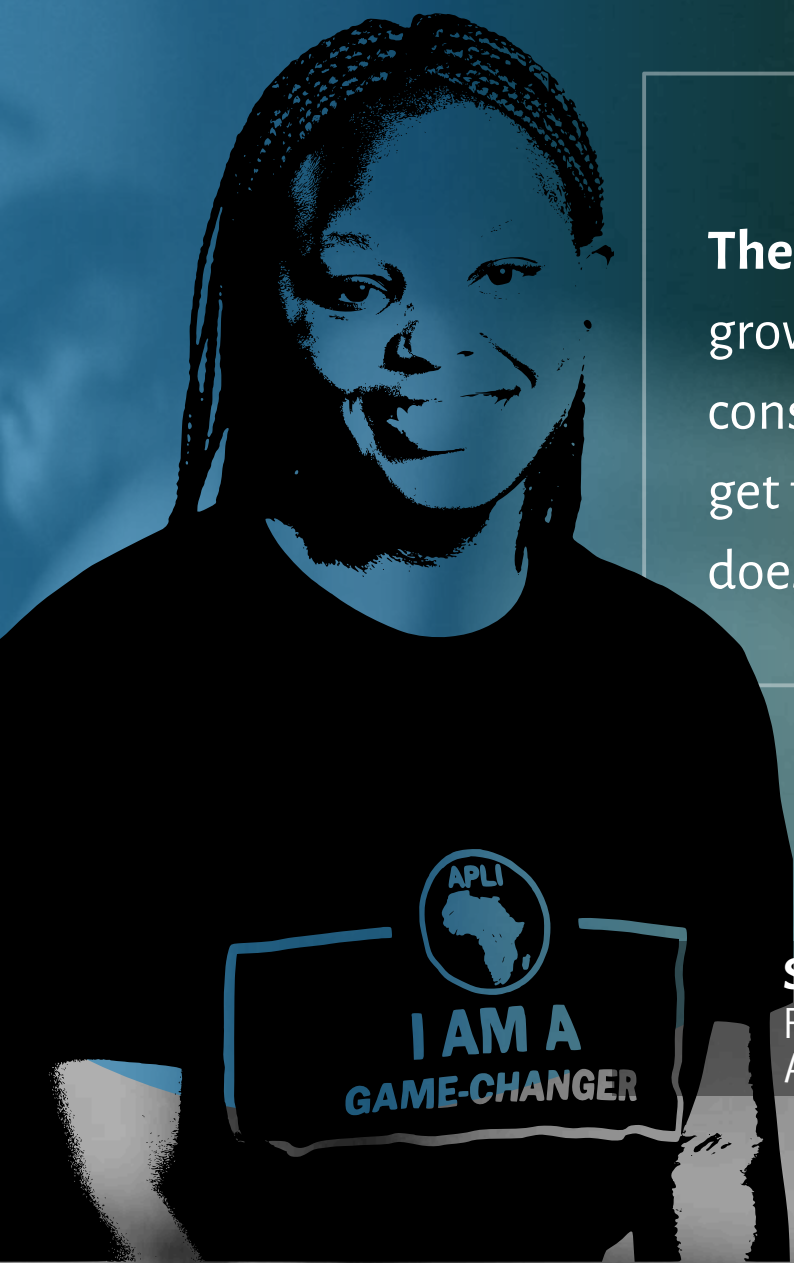
**B**eing part of the African Pathfinder Leaders Initiative (APLI) fellowship for 2024 has broadened my horizon in more ways than one!

I have gained valuable friendships, connections and endless streams of knowledge that's constantly flowing.

Thank you so much African Pathfinder Leaders Initiative (APLI) for not just the shared concepts and knowledge but for surrounding me with people who believe in me and who keep pushing me to exceed my own boundaries.

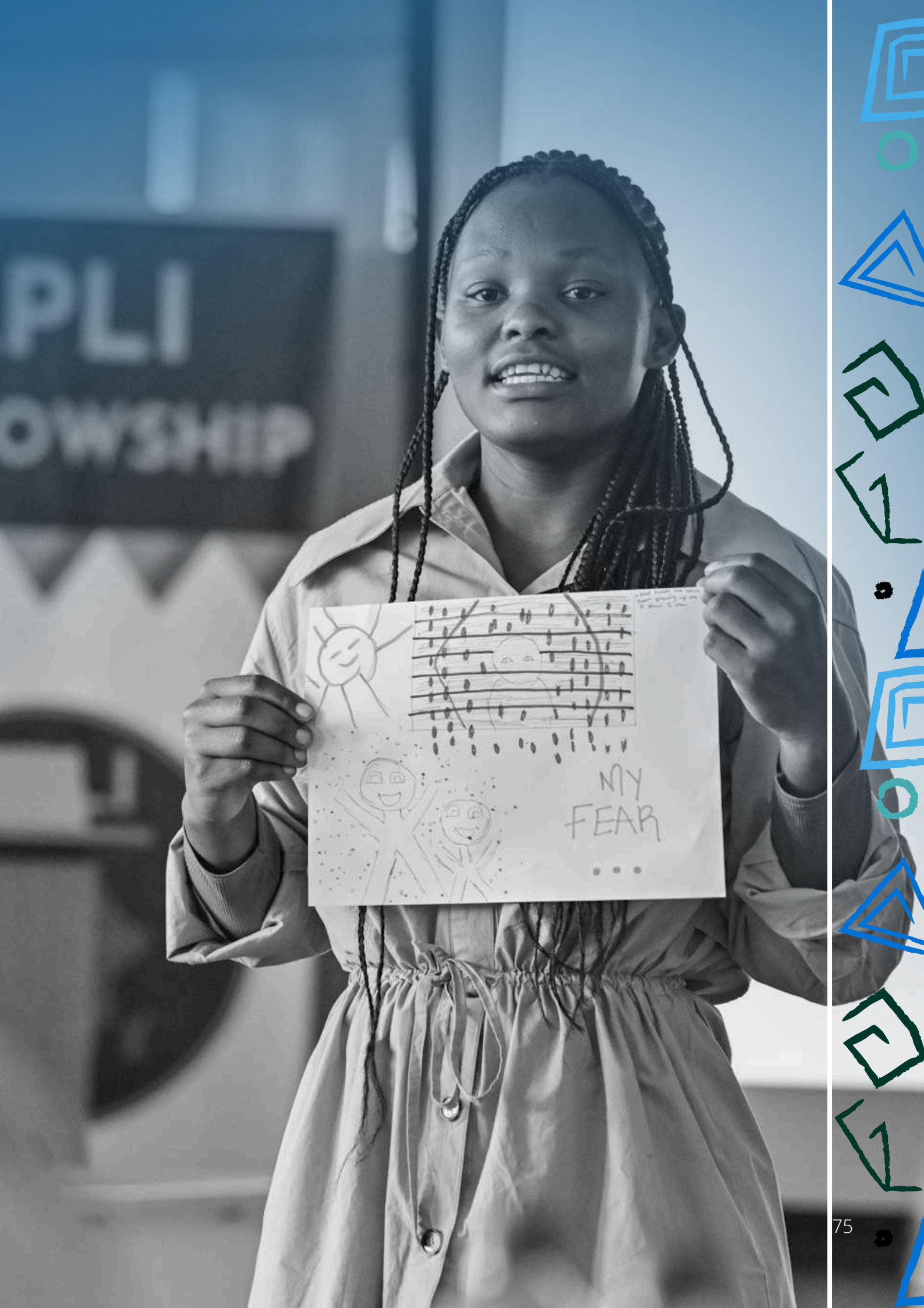


**The learning continues,** the growing continues and the constant expansion of who I get to show up as in this world doesn't stop.



**Suzeth Ngutonua**  
Founder- Growing in Community  
APLI 2024 Maverick





PLI  
OWNSHIP

